



Reclamation and Development Grants Program

HB 7 and HB 14



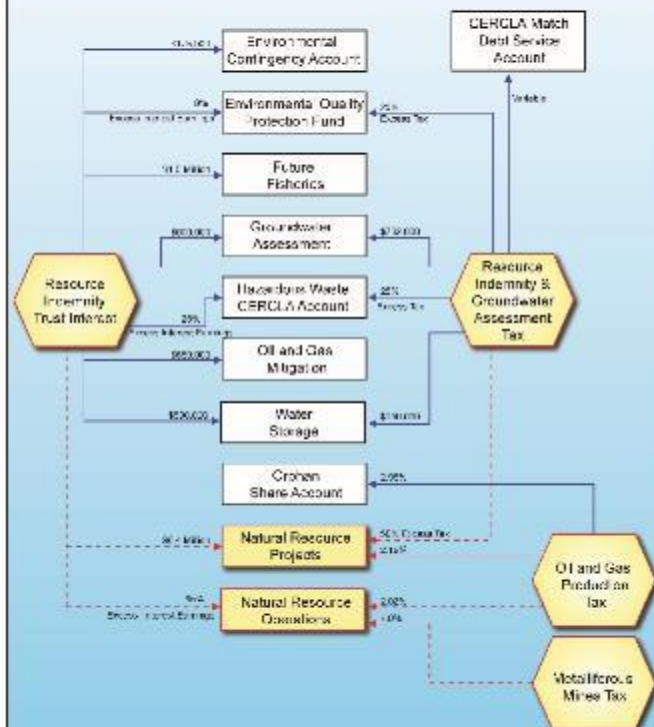
2008



Soda Butte Creek

2013

Allocation of Funding Sources for Natural Resource Programs 2023 Biennium



Natural Resource
Operations

Natural Resource
Projects

Natural Resource Operations

Administration Expenses (HB 2)

Natural Resource Projects

To enhance Montana's renewable resources through projects that measurably conserve, develop, manage, or preserve resources.

***RRGL Grants & RDG Grants
(HB 6 & HB 7)***

Resource Indemnity Trust



Resource Indemnity Trust



Updated October 2019

RESOURCE INDEMNITY TRUST (RIT) - ENABLING ACT

Article IX of the Montana Constitution provides for the protection and improvement of the Montana environment and requests the legislature to provide adequate remedies for environmental protection from degradation.

It specifically requires "oil lands disturbed by the taking of natural resources shall be reclaimed", and

requires the existence of a resource indemnity trust (RIT) fund for that purpose, to be funded by taxes on the extraction of natural resources.

The constitution further states, "The principal of the resource indemnity trust shall forever remain inviolate in an amount of one hundred million dollars (\$100,000,000) guaranteed by the state against loss or diversion."

The state constitution requires a trust, but does not require the trust to be funded. The legislature utilized certain natural resource extraction tax proceeds as a revenue source for the trust. In February of 2002, the Governor certified that the balance of the trust had exceeded the \$100.0 million threshold. Tax proceeds previously directed to the RIT have been re-directed by the legislature ever since.

FUND DESCRIPTIONS

A RIT fund is defined as a fund receiving RIT interest or Resource Indemnity Ground Water Assessment (RIGWA) taxes.

- **Ground water assessment account** - funds groundwater monitoring and characterization studies
- **Natural Resource Project** - funds grants and loans to address damage from non-renewable extraction as well as funding for projects that conserve, develop or manage, or preserve resources
- **Hazardous Waste/Comprehensive Environmental Response, Compensation and Liability Act (CERCLA)** - funds for the implementation of the Montana Hazardous Waste Act and state expenses for overseeing the federal CERCLA.
- **Environmental Quality Protection Fund** - utilized to identify, investigate, negotiate and prosecute individuals/entities to achieve remedial action or recover costs and damages under the state superfund program.
- **Environmental Contingency Account** - controlled by the Governor for the purpose of responding to emergent or imminent threats to the environment.
- **Future Fisheries** - funds to reclaim habitat and spawning areas of the bull and cutthroat trout.
- **Oil & Gas Production Mitigation Account** - funds for properly plugging a well and other reclaiming or restoring, or both, a drill site or other drilling or producing area damaged by oil and gas operations.
- **Natural Resource Operations** - funds to support the natural resource programs within state government.
- **Water Storage Account** - repair and maintenance of state owned water facilities.
- **CERCLA General Obligation Debt Service** - used to pay the debt services on state bonds issued in support of CERCLA or Superfund Law.

TAX DESCRIPTIONS



Resource indemnity
and ground water
assessment (RIGWA)
tax on the gross value
of coal and most
minerals.

All minerals taxed are
assessed a \$25 base
tax.

Coal - 0.4% of the gross
value

Minerals - 0.5% of the gross
value

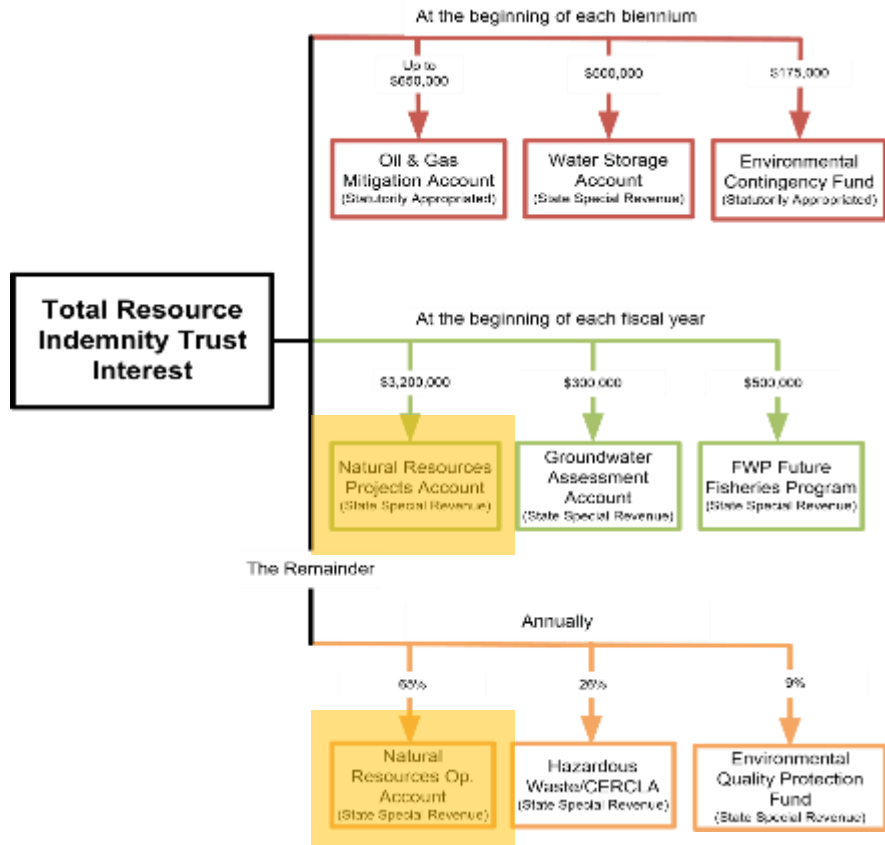
Talc - 4% of the gross value

Vermiculite - 2% of the gross
value

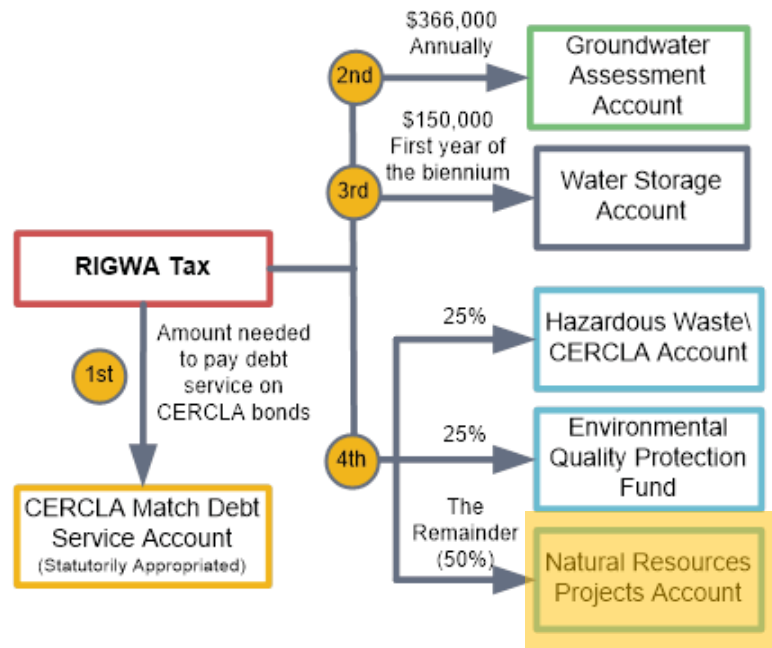
Limestone -10% of the gross
value

Garnets -1% of the gross
value

TRUST (RIT) INTERST EARNINGS - DISTRIBUTION



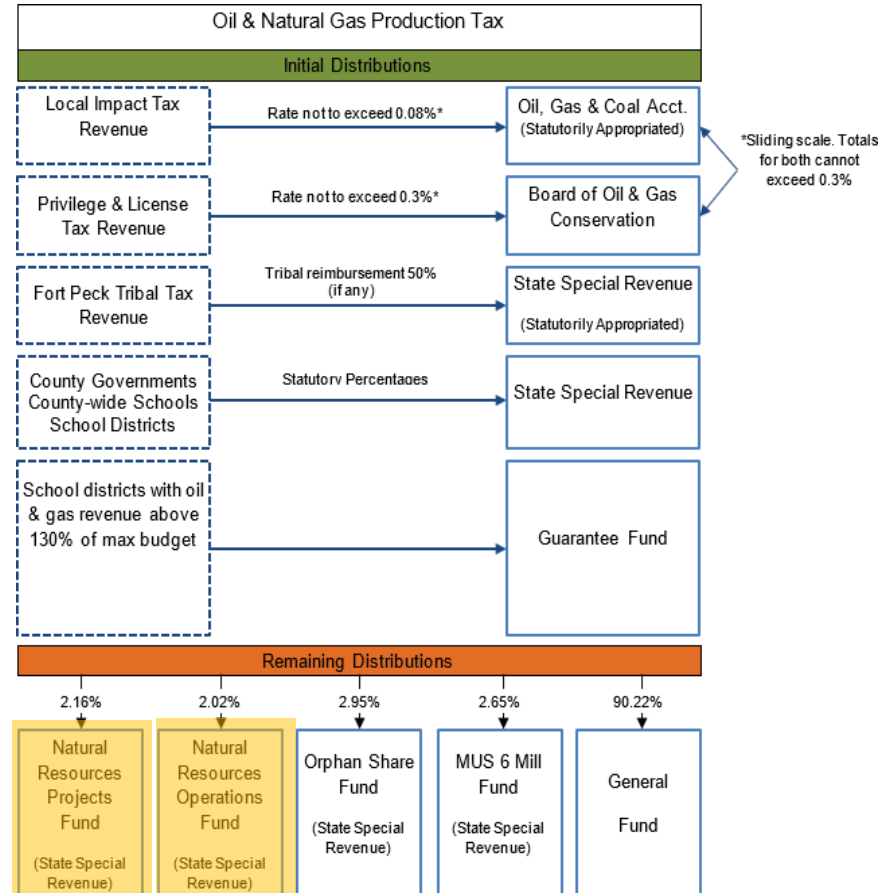
RIGWA TAX - DISTRIBUTION



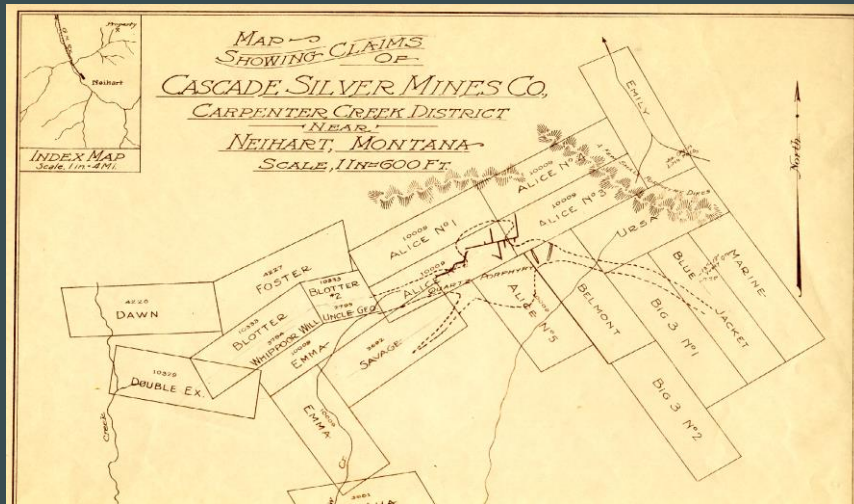
Oil & Natural Gas Production Tax



Tax is imposed on the production of oil and natural gas in the state.

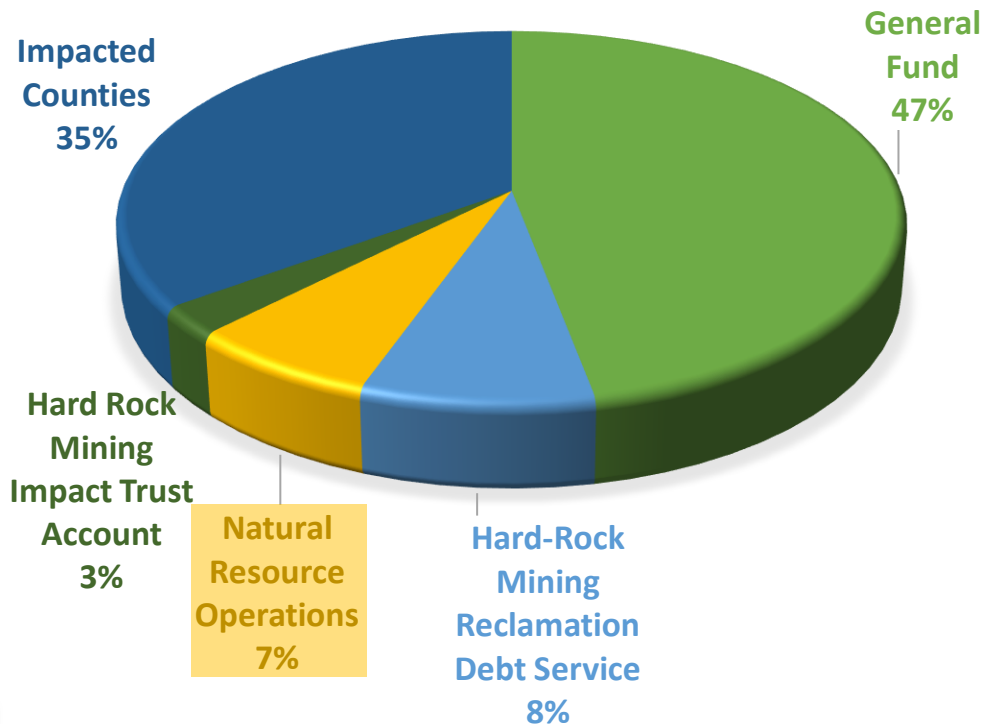


Metalliferous Mines Tax



The metalliferous mines license tax is imposed on the production of metals, gems or stones in the state.

TAX DISTRIBUTION





Reclamation and Development Grants Program

HB 7 and HB 14



2008



Soda Butte Creek

2013



Governor
STEVE BULLOCK
STATE OF MONTANA

Governor's Executive Budget
Fiscal Years 2022 - 2023

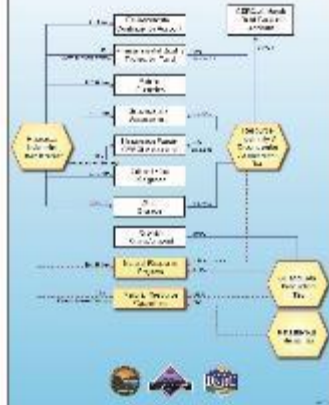
Reclamation and Developmental
Grants Program

Department of Natural Resources
and Conservation
Conservation and Resource
Development Division



Volume 5

Allocation of Funding Sources for Natural Resource Programs 2023 Biennium



Handouts

[illegible]

Information on different types of SME Exports from India						
Export Type	Product Category	Country	Period	Value (USD)	Volume (MT)	Comments
Export of Services	IT Services, Consulting, etc.	USA	2010-2011	1,200,000,000	1,200,000	High growth sector
Export of Goods	Handicrafts, Textiles, etc.	UK	2010-2011	500,000,000	500,000	Traditional exports
Export of Goods	IT Hardware, Software, etc.	China	2010-2011	800,000,000	800,000	High volume exports
Export of Goods	IT Hardware, Software, etc.	Japan	2010-2011	300,000,000	300,000	High value exports
Export of Goods	IT Hardware, Software, etc.	Germany	2010-2011	200,000,000	200,000	High value exports
Export of Goods	IT Hardware, Software, etc.	France	2010-2011	150,000,000	150,000	High value exports
Export of Goods	IT Hardware, Software, etc.	Italy	2010-2011	100,000,000	100,000	High value exports
Export of Goods	IT Hardware, Software, etc.	Spain	2010-2011	50,000,000	50,000	High value exports
Export of Goods	IT Hardware, Software, etc.	Portugal	2010-2011	20,000,000	20,000	High value exports
Export of Goods	IT Hardware, Software, etc.	Greece	2010-2011	10,000,000	10,000	High value exports
Export of Goods	IT Hardware, Software, etc.	Poland	2010-2011	5,000,000	5,000	High value exports
Export of Goods	IT Hardware, Software, etc.	Czech Republic	2010-2011	2,000,000	2,000	High value exports
Export of Goods	IT Hardware, Software, etc.	Slovak Republic	2010-2011	1,000,000	1,000	High value exports
Export of Goods	IT Hardware, Software, etc.	Hungary	2010-2011	500,000	500	High value exports
Export of Goods	IT Hardware, Software, etc.	Romania	2010-2011	200,000	200	High value exports
Export of Goods	IT Hardware, Software, etc.	Bulgaria	2010-2011	100,000	100	High value exports
Export of Goods	IT Hardware, Software, etc.	Slovenia	2010-2011	50,000	50	High value exports
Export of Goods	IT Hardware, Software, etc.	Croatia	2010-2011	20,000	20	High value exports
Export of Goods	IT Hardware, Software, etc.	Serbia	2010-2011	10,000	10	High value exports
Export of Goods	IT Hardware, Software, etc.	Montenegro	2010-2011	5,000	5	High value exports
Export of Goods	IT Hardware, Software, etc.	Albania	2010-2011	2,000	2	High value exports
Export of Goods	IT Hardware, Software, etc.	Macedonia	2010-2011	1,000	1	High value exports
Export of Goods	IT Hardware, Software, etc.	Bosnia and Herzegovina	2010-2011	500,000	500	High value exports
Export of Goods	IT Hardware, Software, etc.	Herzegovina	2010-2011	200,000	200	High value exports
Export of Goods	IT Hardware, Software, etc.	North Macedonia	2010-2011	100,000	100	High value exports
Export of Goods	IT Hardware, Software, etc.	Kosovo	2010-2011	50,000	50	High value exports
Export of Goods	IT Hardware, Software, etc.	Timor-Leste	2010-2011	20,000	20	High value exports
Export of Goods	IT Hardware, Software, etc.	Palau	2010-2011	10,000	10	High value exports
Export of Goods	IT Hardware, Software, etc.	Marshall Islands	2010-2011	5,000	5	High value exports
Export of Goods	IT Hardware, Software, etc.	Northern Mariana Islands	2010-2011	2,000	2	High value exports
Export of Goods	IT Hardware, Software, etc.	Guam	2010-2011	1,000	1	High value exports
Export of Goods	IT Hardware, Software, etc.	U.S. Virgin Islands	2010-2011	500,000	500	High value exports
Export of Goods	IT Hardware, Software, etc.	British Virgin Islands	2010-2011	200,000	200	High value exports
Export of Goods	IT Hardware, Software, etc.	Cayman Islands	2010-2011	100,000	100	High value exports
Export of Goods	IT Hardware, Software, etc.	Anguilla	2010-2011	50,000	50	High value exports
Export of Goods	IT Hardware, Software, etc.	Antigua and Barbuda	2010-2011	20,000	20	High value exports
Export of Goods	IT Hardware, Software, etc.	Barbados	2010-2011	10,000	10	High value exports
Export of Goods	IT Hardware, Software, etc.	Belize	2010-2011	5,000	5	High value exports
Export of Goods	IT Hardware, Software, etc.	Bermuda	2010-2011	2,000	2	High value exports
Export of Goods	IT Hardware, Software, etc.	Bahamas	2010-2011	1,000	1	High value exports
Export of Goods	IT Hardware, Software, etc.	Aruba	2010-2011	500,000	500	High value exports
Export of Goods	IT Hardware, Software, etc.	Curaçao	2010-2011	200,000	200	High value exports
Export of Goods	IT Hardware, Software, etc.	Suriname	2010-2011	100,000	100	High value exports
Export of Goods	IT Hardware, Software, etc.	French Guiana	2010-2011	50,000	50	High value exports
Export of Goods	IT Hardware, Software, etc.	Guadeloupe	2010-2011	20,000	20	High value exports
Export of Goods	IT Hardware, Software, etc.	Martinique	2010-2011	10,000	10	High value exports
Export of Goods	IT Hardware, Software, etc.	Reunion	2010-2011	5,000	5	High value exports
Export of Goods	IT Hardware, Software, etc.	Mayotte	2010-2011	2,000	2	High value exports
Export of Goods	IT Hardware, Software, etc.	Comoros	2010-2011	1,000	1	High value exports
Export of Goods	IT Hardware, Software, etc.	Madagascar	2010-2011	500,000	500	High value exports
Export of Goods	IT Hardware, Software, etc.	Mauritius	2010-2011	200,000	200	High value exports
Export of Goods	IT Hardware, Software, etc.	Reunion	2010-2011	100,000	100	High value exports
Export of Goods	IT Hardware, Software, etc.	Mayotte	2010-2011	50,000	50	High value exports

2020 Reclamation and Development Grants Program Applications



Reclamation and Development Grants Program 2023 Biennium Report





Reclamation and Development Grants Program

HB 7 and HB 14



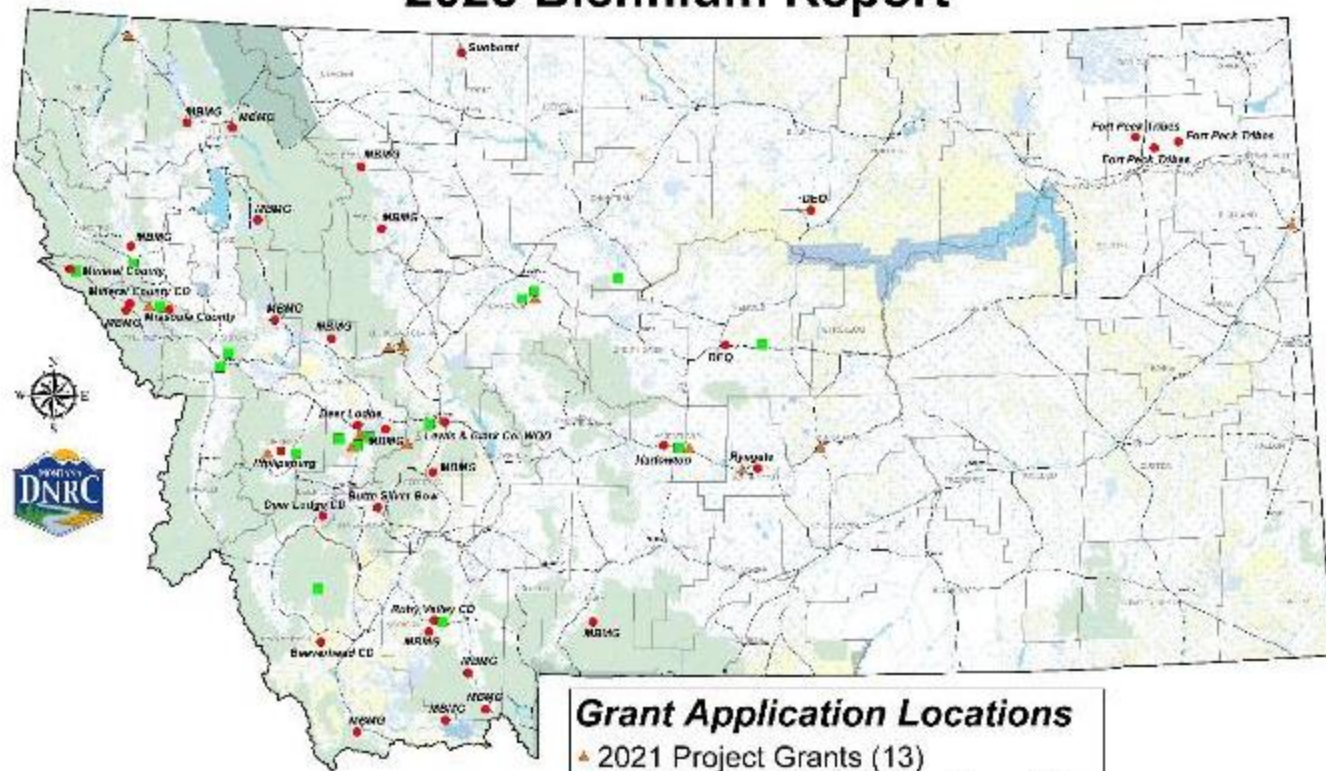
2008



Soda Butte Creek

2013

Reclamation and Development Grants Program 2023 Biennium Report



Town of Philipsburg

Wastewater Treatment
System Improvements,
Metals Contaminated
Sludge Removal and
Disposal

- HB 7
- Rank: 1
- [Page 8](#)



Mineral County Conservation District

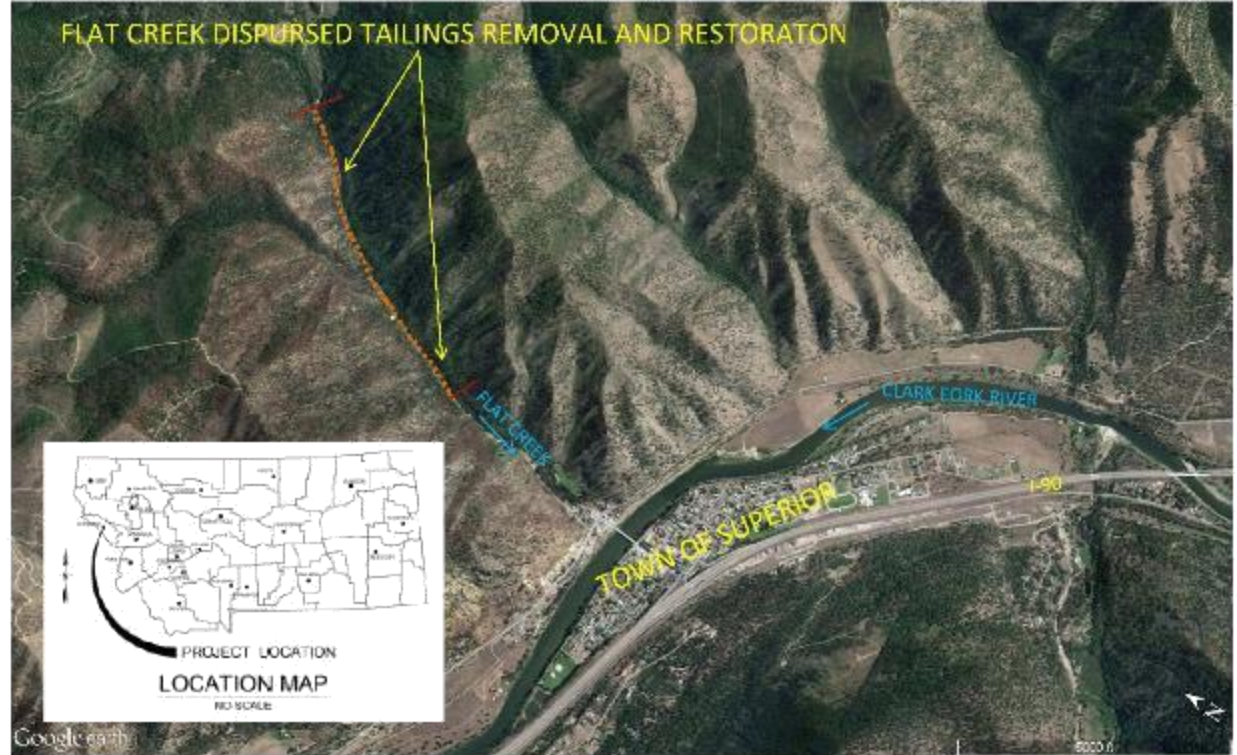
Flat Creek Dispersed Tailings Removal and Restoration

- HB 7
- Rank: 2
- [Page 10](#)

Flat Creek flows into the Clark Fork River at the town of Superior and has a history of extensive mining in the drainage. Heavy metal contamination originated from the Iron Mountain Mine and the associated tailings were deposited along the nearby creek, hillslopes and floodplains. The tailings have high levels of Arsenic, Lead, and Zinc.



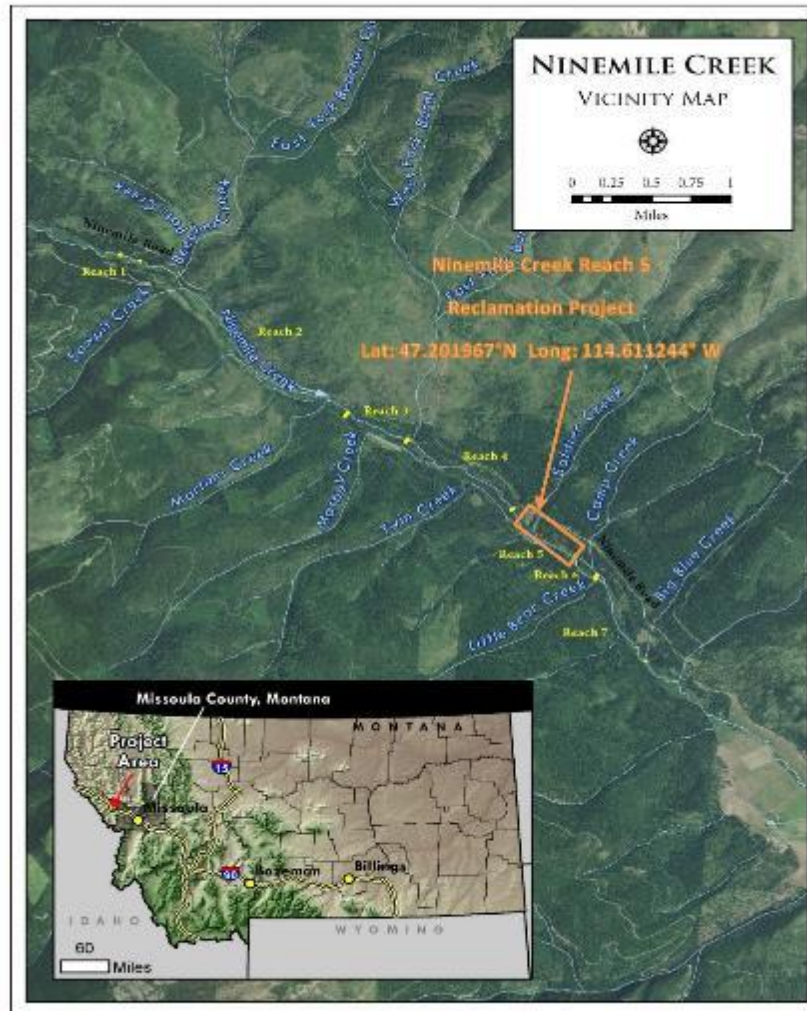
*A Cooperative Project
Between the
Mineral County CD
U.S. Forest Service and
Trout Unlimited*



Missoula County

Ninemile Creek Placer Mine Reclamation, Phase 6

- HB 7
- Rank: 3
- [Page 13](#)



City of Harlowton

Contaminated Soils
and Free Product
Removal at the
Harlowton
Roundhouse in
Harlowton, MT, Phase
4

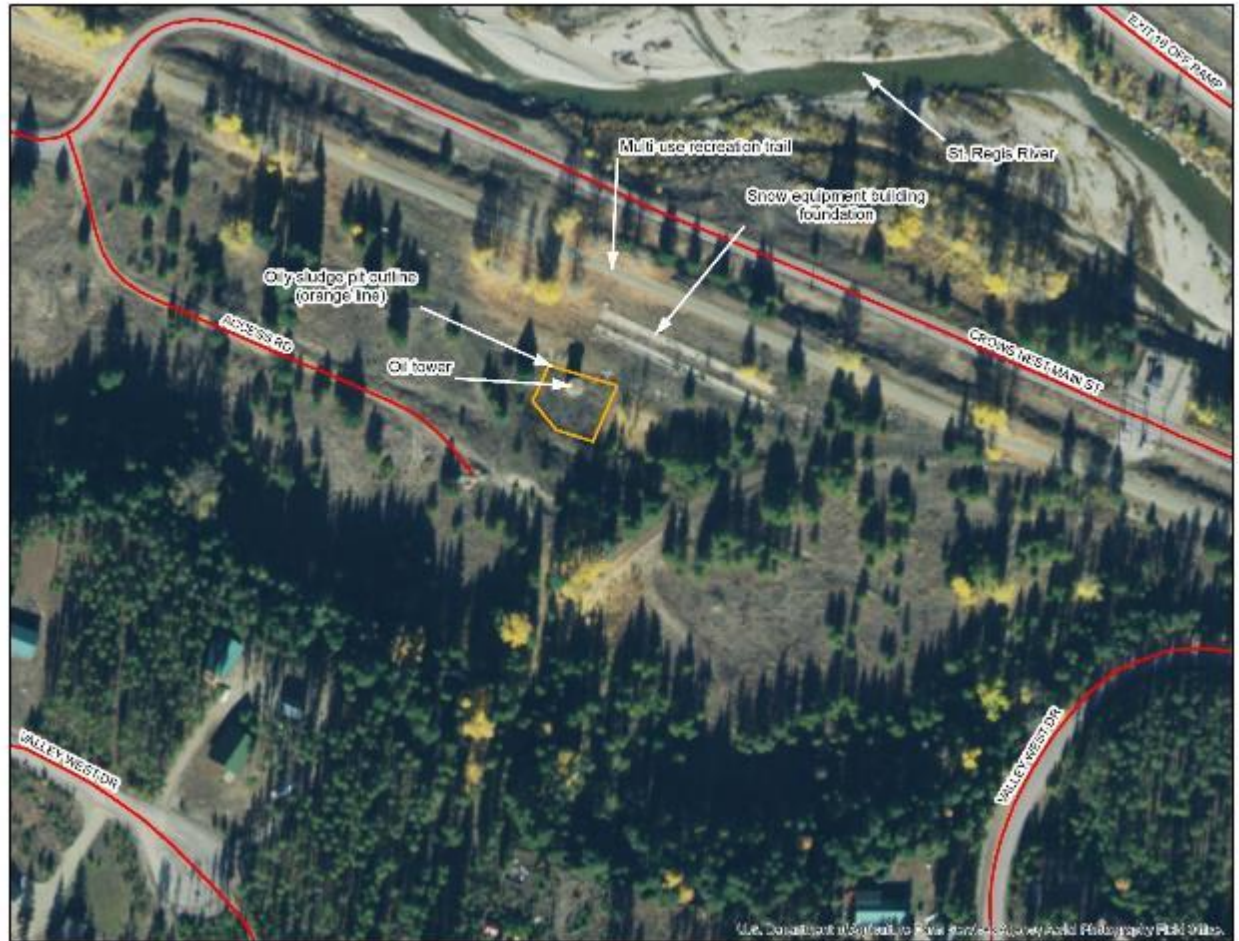
- HB 7
- Rank: 4
- [Page 16](#)



Mineral County

Interim Remedial Action at Milwaukee Road – Haugan State Superfund Facility

- HB 7
- Rank: 5
- [Page 19](#)



Powell County

Milwaukee Roundhouse Area Remediation, Phase 2

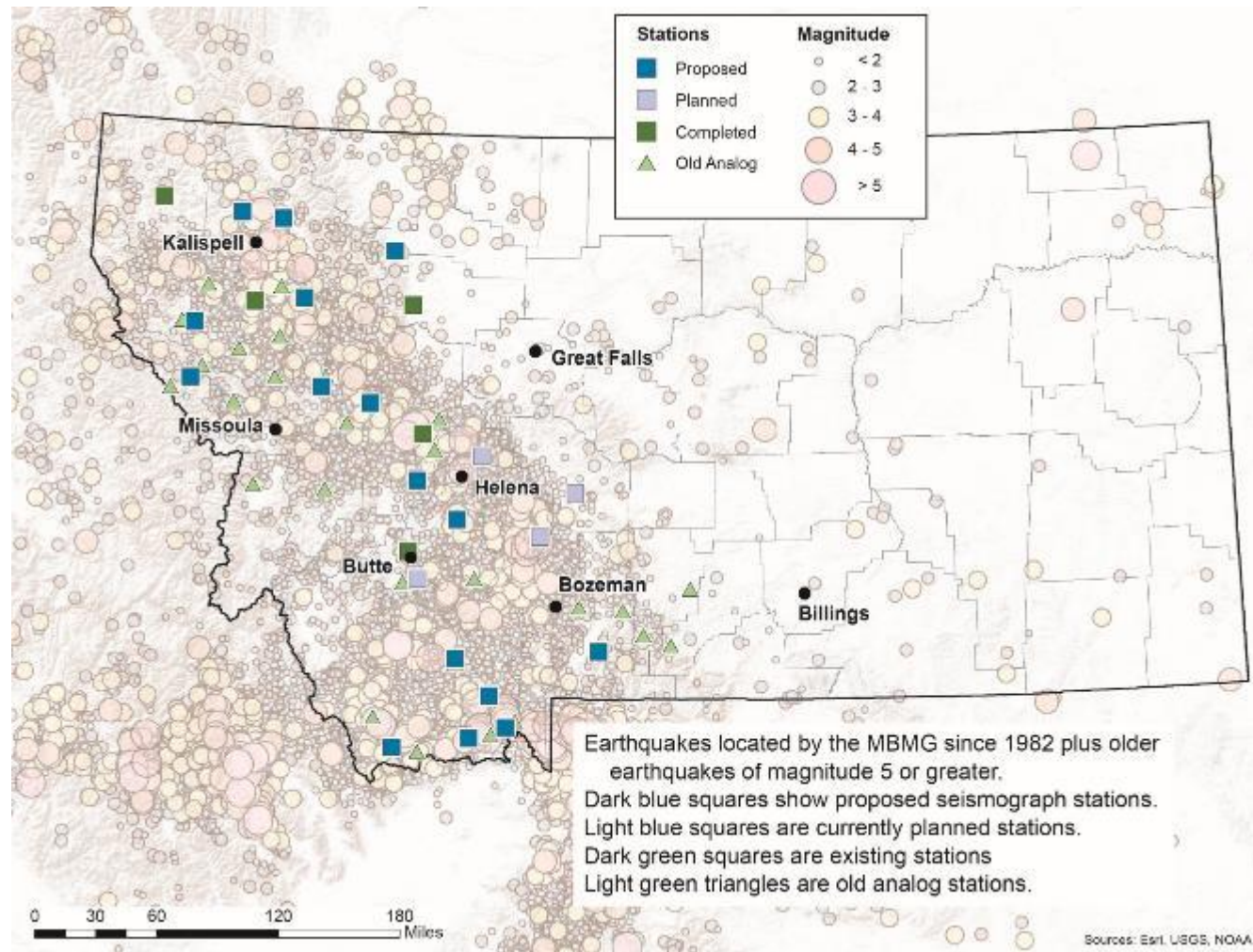
- HB 7
- Rank: 6
- [Page 21](#)



Montana Tech – Montana Bureau of Mines and Geology

Modernization of Montana's Regional Seismic Network

- HB 7
- Rank: 7
- [Page 23](#)



Montana Department of Environmental Quality

Swift Gulch High Flow Treatment System and Stream Rehabilitation

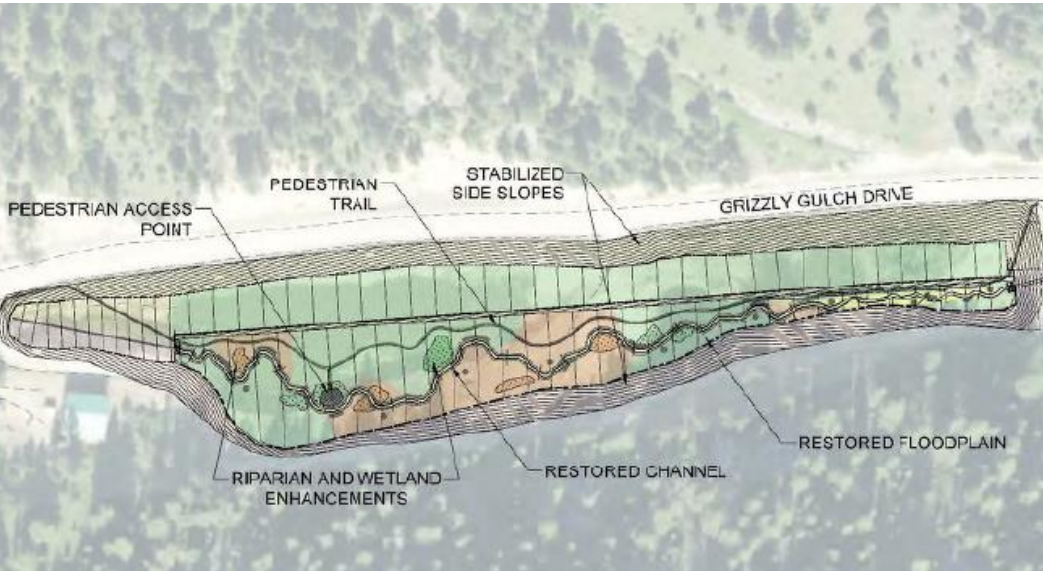
- HB 7
- Rank: 8
- [Page 25](#)



Lewis and Clark County

Grizzly Gulch Reclamation Project

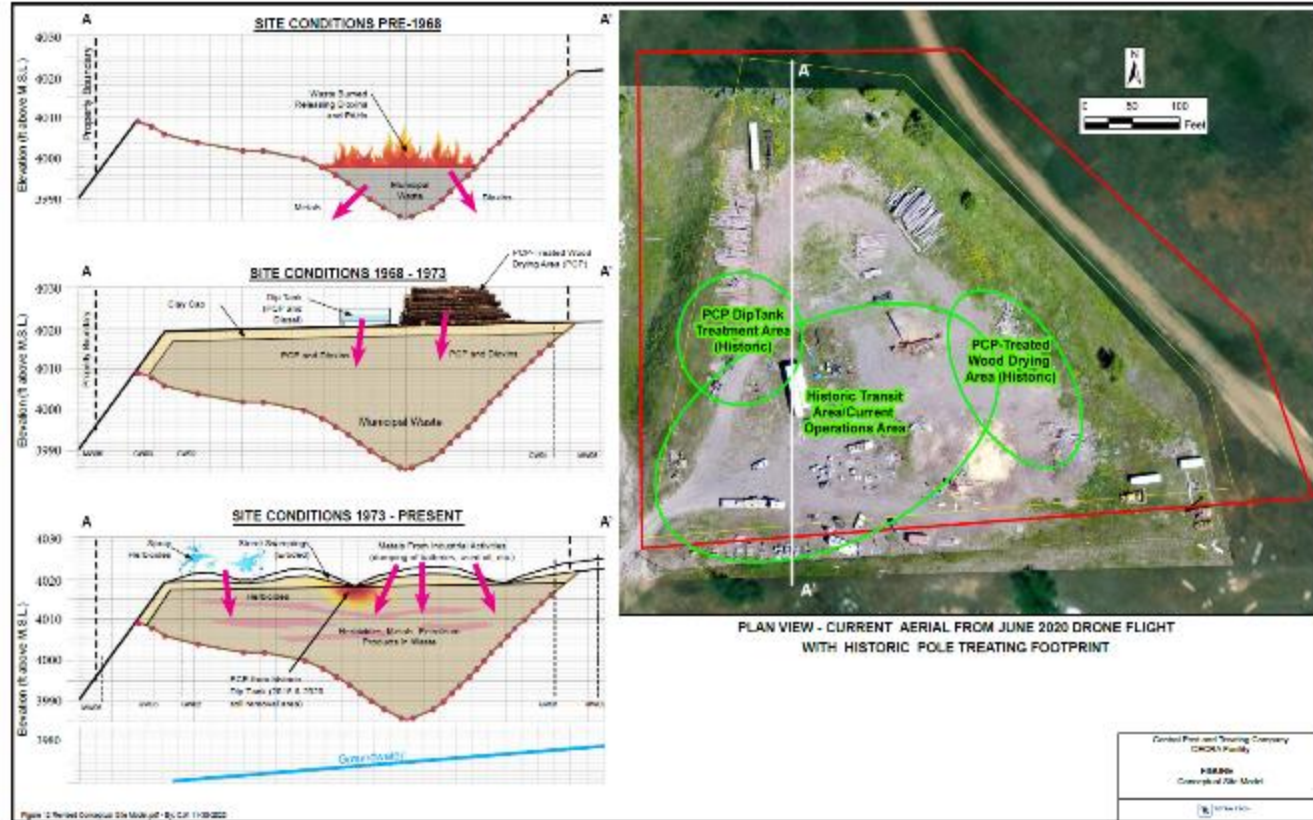
- HB 7
- Rank: 9
- [Page 28](#)



City of Lewistown

Central Post and Treating Company CECRA Facility Phase 2, Capping and Site Reclamation

- HB 14
- Rank: 10
- [Page 30](#)



Town of Sunburst

Suta South Petroleum Cleanup

- HB 14
- Rank: 11
- [Page 32](#)



Butte-Silver Bow Government

Butte Mining District: Reclamation and Protection Project, Phase V

- HB 14
- Rank: 12
- [Page 34](#)

Butte-Silver Bow Butte Mining District Reclamation & Protection Project – Phase V

Anselmo Mineyard



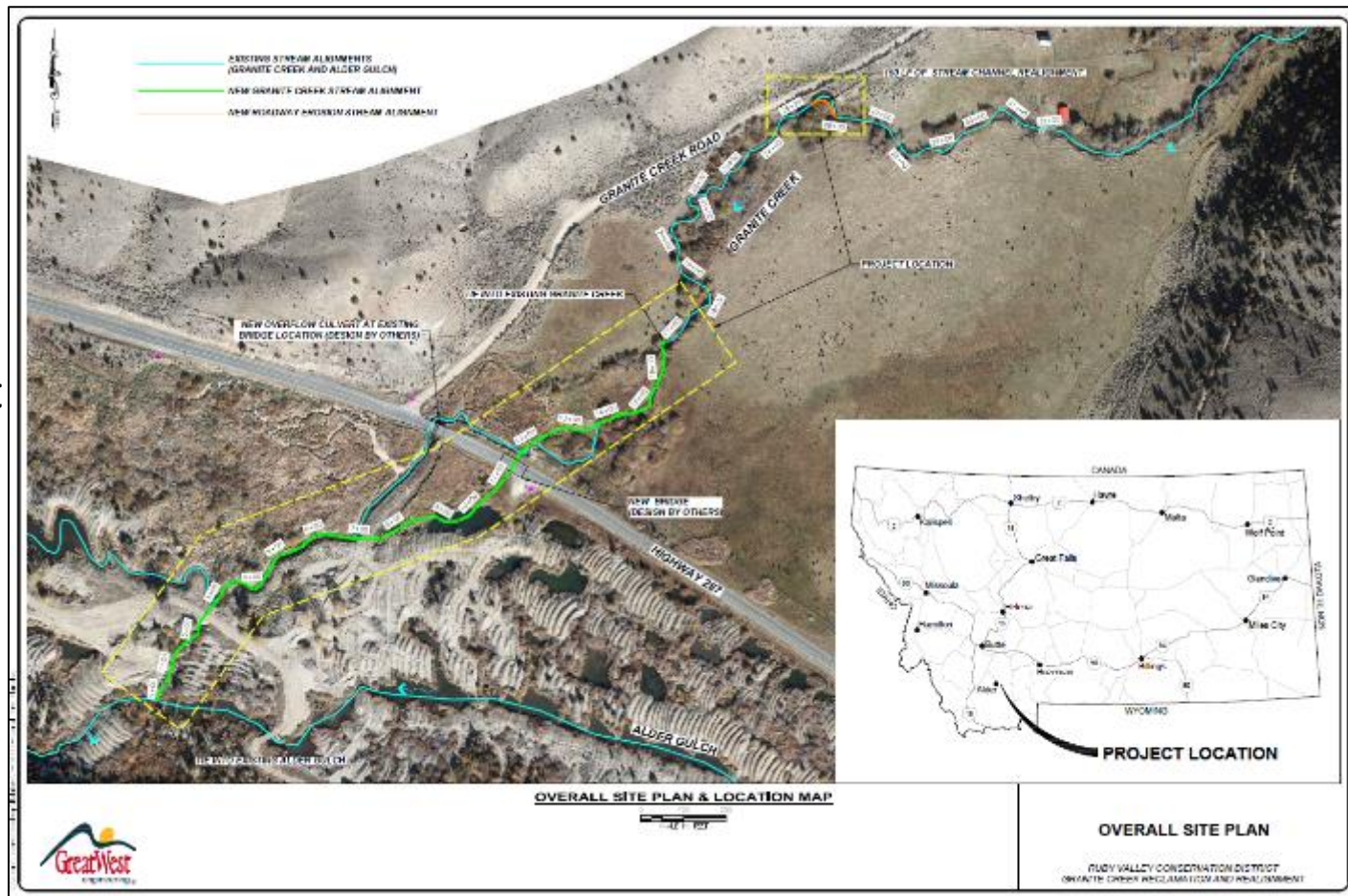
Steward Mineyard



Ruby Valley Conservation District

Granite Creek Reclamation and Realignment Project

- HB 14
- Rank: 13
- [Page 36](#)







Deer Lodge Valley Conservation District

Upper French Gulch Fish Passage and Restoration Project

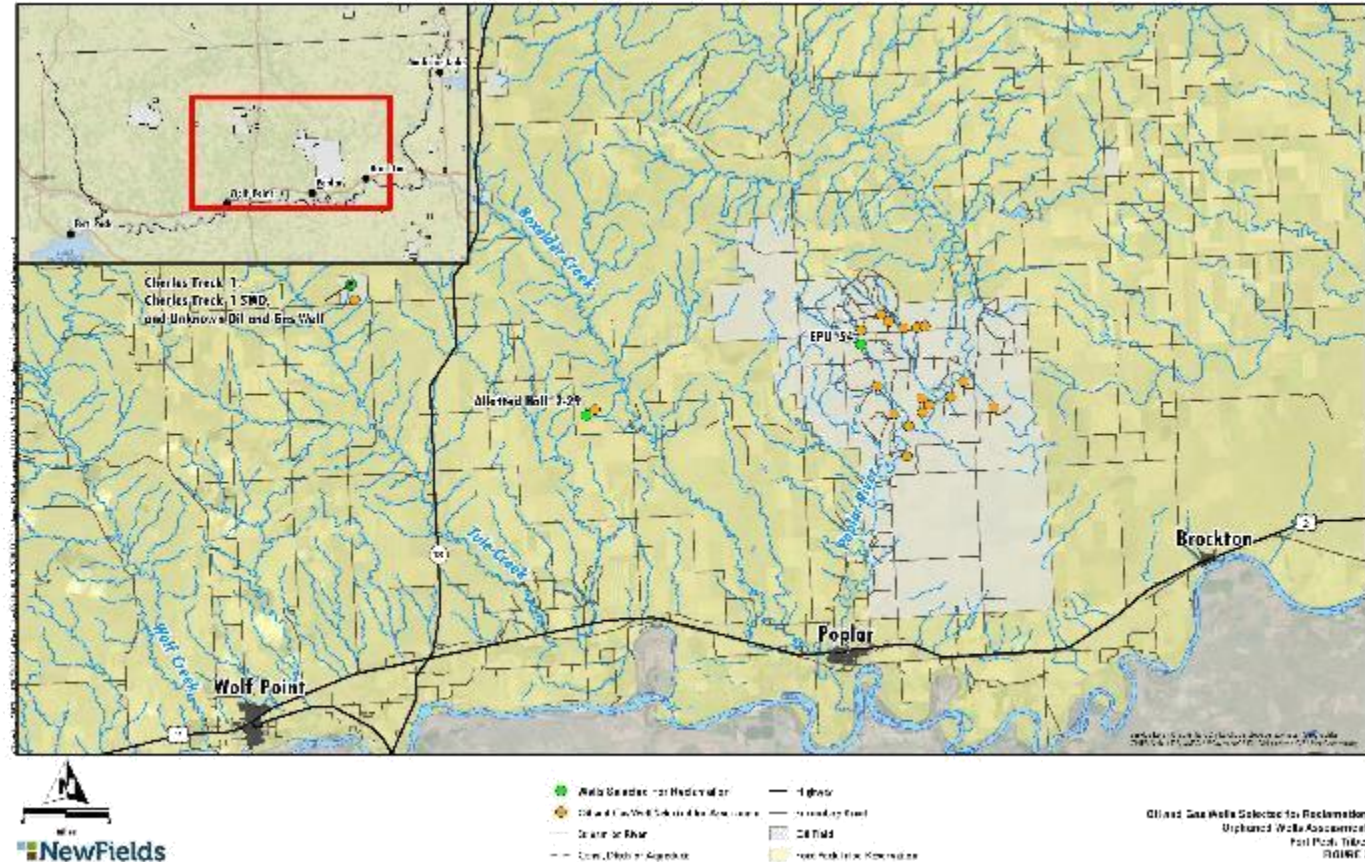
- HB 14
- Rank: 14
- [Page 38](#)



Fort Peck Assiniboine and Sioux Tribes

Orphaned Oil Well Abandonment and Reclamation

- HB 14
- Rank: 15
- [Page 41](#)



Town of Ryegate

Former Ryegate Conoco Groundwater Remediation

- HB 14
- Rank: 16
- [Page 43](#)









